



The Yards Park - Washington DC  
Paul Friedburg - Landscape Architecture

Waterfronts Plazas Streetscapes Community parks Corporate campuses Sports complexes Light rail stations Green roofs  
Urban greenways Complete streets Arts districts Arboreta Redevelopment zones Boulevards Tactical urbanism Green streets

# Urban Design

## CAREER

Landscape architects examine civic environments and human activity and weave them together into a fabric of streets and open spaces, cultures and meaningful places, historically significant and emerging identities, social equity and economic viability. Urban design is a collaborative venture involving landscape architects, planners, architects, civil engineers, artists, developers, politicians, and residents. Understanding design at different scales is important ranging from block and neighborhood, to district and municipality. Each new scale introduces new complexities, issues and considerations. Students studying urban design visit outstanding examples in Baltimore, Washington DC, and New York City. They also visit professional offices and talk with practicing professionals who visit the studio and give feedback on design solutions.

## EMPLOYMENT OPTIONS

- **Urban Design Practice**  
Design Collective, Mahan Rykiel, Ayers Saint Gross  
EDSA, International, Oehme van Sweden, OLIN  
Michael Vergason Landscape Architects, HOK  
Toole Design, Land Collective, Snohetta, West 8  
Michael Van Valkenburgh Associates, Design Workshop  
James Corner Field Operations, Hargreaves Associates  
Mathews Nielsen Landscape Architects, Andropogon  
MESA Design Group, M. Paul Friedberg Partners
- **Municipal and State Agencies**  
GSA, Planning and Zoning, Transportation
- **Non-profit Organizations**  
Neighborhood Design Center, Urban Land Institute

## RELATED COURSEWORK

- LARC 141 Design Fundamentals Studio
- LARC 221 Digital Design Tools
- LARC 320 Principles of Site Engineering
- LARC 321 Landscape Structures and Materials
- LARC 340 Site Planning and Design Studio
- LARC 389 Internship/Study Abroad
- LARC 420 Professional Practice
- LARC 440 Urban Design Studio
- LARC 470 Landscape Architecture Seminar

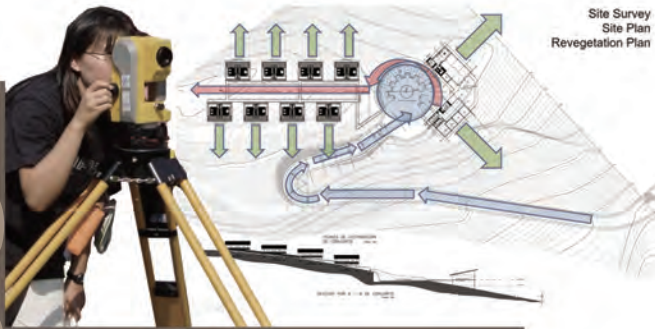


**LANDSCAPE ARCHITECTURE**  
Department of Plant Science and Landscape Architecture

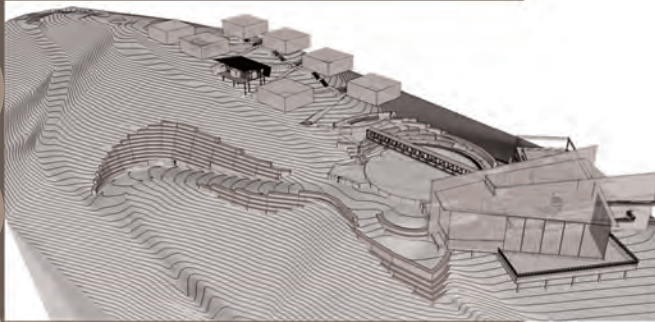


www.larch.umd.edu  
301.405.4359  
larc@umd.edu

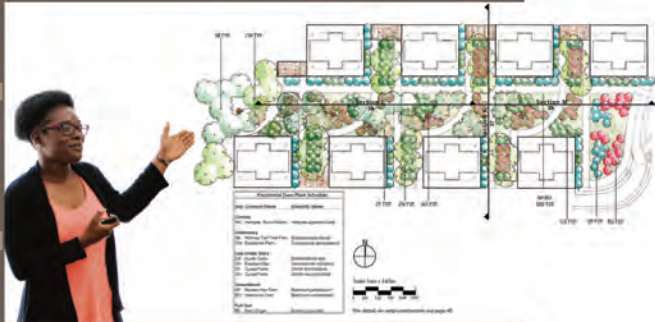
4291 Fieldhouse Drive  
2139 Plant Sciences Bldg  
College Park, MD 20742



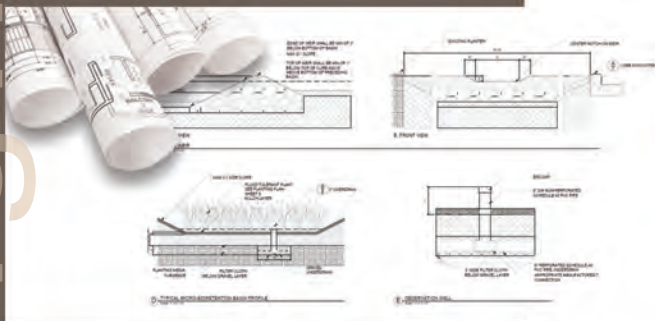
1. Data Collection, Inventory & Analysis



2. Conceptual Design & Visualization



3. Design Development & Specification



4. Construction Documentation



5. Design Implementation

# Professional Practice

## Landscape Architect Career Path

### Private Office

#### Entry Level (\$45-60K)

- Design - Graphic Presentations
- Construction Details - Site Layout
- Specifications - Site Inventory & Analysis
- Computer-aided Design (CAD)
- Geographic Information Systems (GIS)

#### Project Manager (\$60-85K)

- Design - Quality Control
- Technical Supervision - Budgeting
- Construction Management
- Cost Estimation

#### Associate (\$85-110K)

- Design - Client Communication
- Proposal Submission
- Project Supervision

#### Principal/President (\$110K+)

- Design - Hiring Decisions
- New Directions - Marketing
- Client Communication

### Public Agency (\$ varies)

### Non-Profit Org. (\$ varies)

## Licensing

Licensed landscape architects have a duty to protect the safety, health, property, and welfare of the public. A license is necessary for the purposes of sealing and signing all final drawings, plans, specifications, reports, and other contract documents used for public permitting and final construction. To apply for a license, you need an accredited degree in landscape architecture, to pass the national exam, and complete a 2-year apprenticeship.

### Accredited Degree Requirement

University of Maryland Landscape Architecture is a nationally accredited landscape architecture degree program.

### National Licensing Exam (LARE)

Must complete:

- Section 1: Project and Construction Management
- Section 2: Inventory and Analysis
- Section 3: Design
- Section 4: Grading, Drainage and Construction Documentation

### 2-year Apprenticeship

Individuals must work for two years in the field of landscape architecture under the responsible charge of a licensed landscape architect.

