



Flewellen Creek Ecological Restoration - Fort Bend County, Texas
Biohabitats and SWA Group- Landscape Architecture

Ecological restoration
Green roofs
Living walls
Natural resources conservation
Constructed wetlands
Floodplain restoration
Green infrastructure
Living shorelines
Bioretention
Phytoremediation
Streambank stabilization
Mine reclamation
Greenways

Ecological Design

CAREER

Landscape architects are trained to analyze degraded environmental conditions such as brownfields, strip mines and abandoned urban industrial sites, and restore them to high functioning terrestrial and aquatic ecosystems. They are licensed to legally design and stamp construction documents used by contractors to build their ecological restoration plans, and are reviewed by permitting and inspection agencies to ensure they are built to municipal code. They go beyond safe and efficient engineering to integrate restored environments into communities with trail systems, interpretive signs, viewing stations, and visitor centers. To manage the design process, landscape architects lead teams of consultants such as environmental scientists, technicians, and civil engineers.

EMPLOYMENT OPTIONS

- **Ecological Design Practice**
Biohabitats, Jones and Jones, Turenscape, GGN, HOK
Andropogon, Design Workshop, SWA
- **Environmental Engineering**
Stantec, Dewberry, EQR
- **Municipal and State Agencies**
Planning and Zoning, Transportation, Parks & Recreation
Public Works
- **Non-profit Organizations**
Longwood Gardens, The Nature Conservancy
Chesapeake Bay Land Trust, Anacostia Watershed Society
Low Impact Development Center

RELATED COURSEWORK

- PLSC 100 Introduction to Horticulture
- PLSC 253 Woody Plants for Mid-Atlantic Landscapes I
- PLSC 254 Woody Plants for Mid-Atlantic Landscapes II
- LARC 265 Site Analysis and Ecological Principles
- LARC 320 Principles of Site Engineering
- LARC 321 Landscape Structures and Materials
- LARC 341 Regional Design Studio
- LARC 452 Green Infrastructure and Community Greening
- LARC 453 Intro. to GIS and Hydrologic Modeling
- GEOG 340 Geomorphology or other approved elective

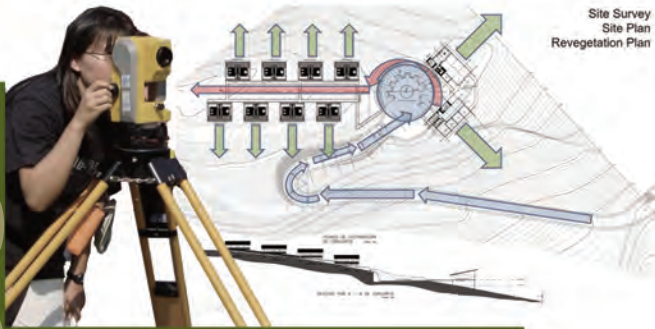


LANDSCAPE ARCHITECTURE
Department of Plant Science and Landscape Architecture

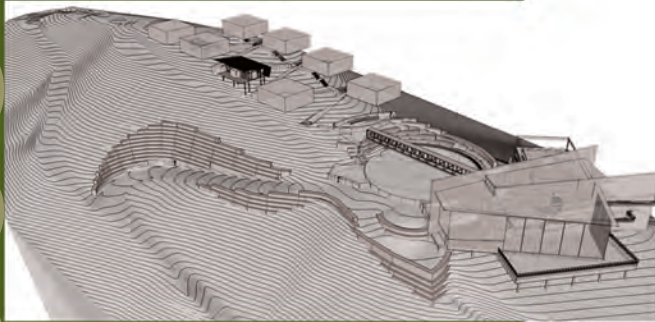


www.larch.umd.edu
301.405.4359
larc@umd.edu

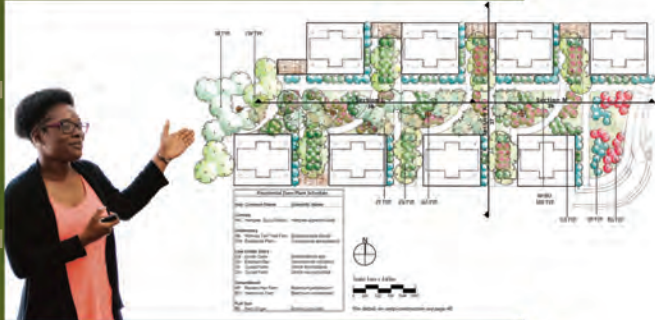
4291 Fieldhouse Drive
2139 Plant Sciences Bldg
College Park, MD 20742



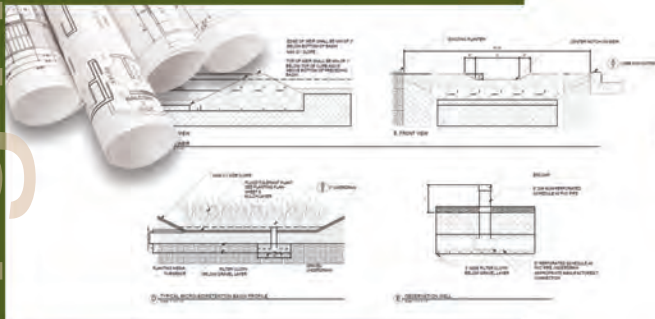
1. Data Collection, Inventory & Analysis



2. Conceptual Design & Visualization



3. Design Development & Specification



4. Construction Documentation



5. Design Implementation

Professional Practice

Landscape Architect Career Path

Private Office

Entry Level (\$45-60K)

- Design - Graphic Presentations
- Construction Details - Site Layout
- Specifications - Site Inventory & Analysis
- Computer-aided Design (CAD)
- Geographic Information Systems (GIS)

Project Manager (\$60-85K)

- Design - Quality Control
- Technical Supervision - Budgeting
- Construction Management
- Cost Estimation

Associate (\$85-110K)

- Design - Client Communication
- Proposal Submission
- Project Supervision

Principal/President (\$110K+)

- Design - Hiring Decisions
- New Directions - Marketing
- Client Communication

Public Agency (\$ varies)

Non-Profit Org. (\$ varies)

Licensing

Licensed landscape architects have a duty to protect the safety, health, property, and welfare of the public. A license is necessary for the purposes of sealing and signing all final drawings, plans, specifications, reports, and other contract documents used for public permitting and final construction. To apply for a license, you need an accredited degree in landscape architecture, to pass the national exam, and complete a 2-year apprenticeship.

Accredited Degree Requirement

University of Maryland Landscape Architecture is a nationally accredited landscape architecture degree program.

National Licensing Exam (LARE)

Must complete:

- Section 1: Project and Construction Management
- Section 2: Inventory and Analysis
- Section 3: Design
- Section 4: Grading, Drainage and Construction Documentation

2-year Apprenticeship

Individuals must work for two years in the field of landscape architecture under the responsible charge of a licensed landscape architect.

